



SEVILLE 290

LIVING AREAS

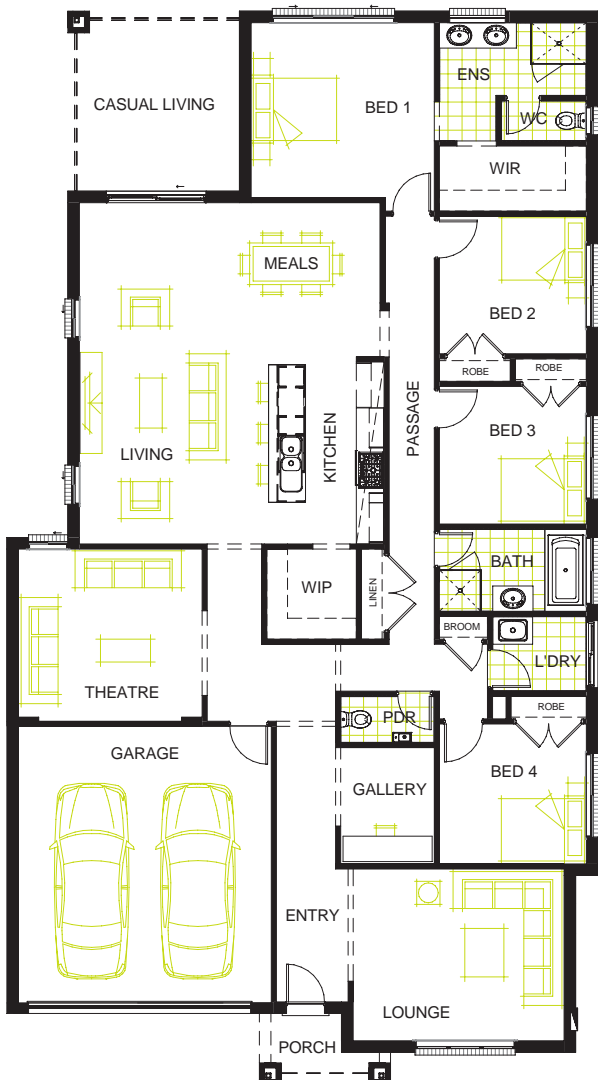
Living/Meals:	7410 mm x 6620 mm
Lounge:	3740 mm x 4590 mm
Theatre:	3750 mm x 4000 mm
Casual Living:	3900 mm x 3720 mm

BEDROOMS

Bedroom 1:	3810 mm x 3990 mm
Bedroom 2:	3000 mm x 3200 mm
Bedroom 3:	3000 mm x 3200 mm
Bedroom 4:	3050 mm x 3200 mm

DIMENSIONS

External Length:	23.25 m
External Width:	12.80 m
Min Block Width:	14.00 m
Total:	269.15 sqm/28.97 sqs



Phone: 1800 604 011
www.longislandhomes.com.au