



MOONBI 240



LIVING AREAS

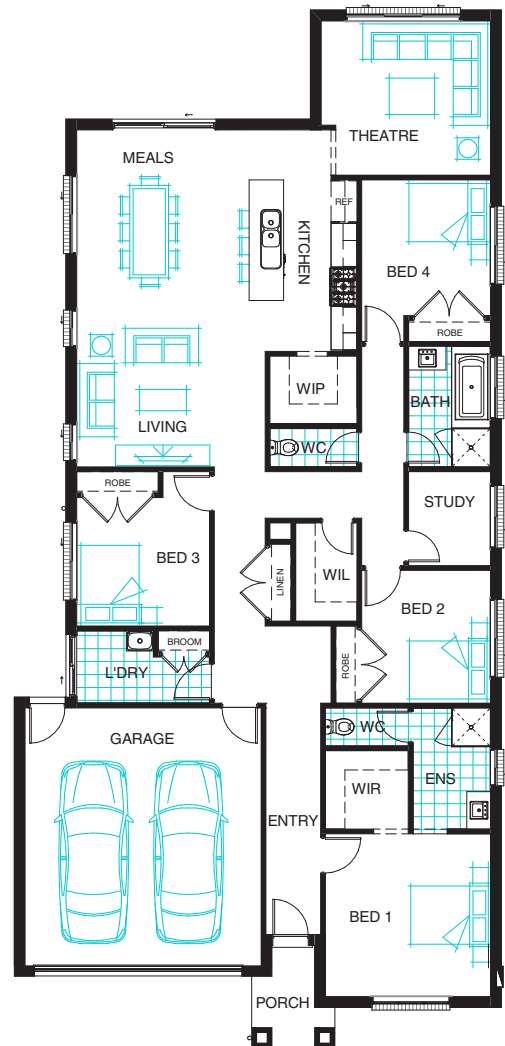
| | |
|---------------|-------------------|
| Living/Meals: | 7840 mm x 4000 mm |
| Theatre: | 3600 mm x 3950 mm |
| Study: | 2200 mm x 1920 mm |

BEDROOMS

| | |
|------------|-------------------|
| Bedroom 1: | 3800 mm x 3850 mm |
| Bedroom 2: | 3100 mm x 3010 mm |
| Bedroom 3: | 3000 mm x 3100 mm |
| Bedroom 4: | 3200 mm x 3010 mm |

DIMENSIONS

| | |
|-------------------|----------------------|
| External Length: | 24.08 m |
| External Width: | 11.30 m |
| Min Block Width: | 12.50 m |
| Min Block Length: | 31.00 m |
| Total: | 225.86 sqm/24.31 sqs |



Phone: 1800 604 011
www.longislandhomes.com.au